



Dear Fellow Educators,

On behalf of the Board of Directors and staff of the Northwest Educational Service District 189 (NWESD), I am pleased to submit this annual report for the 2017-18 school year. This report highlights key data about our region as well as specific spotlights of NWESD partnerships with the districts we serve.

The 2018-19 school year coincides with the 50th Anniversary of Washington State Educational Service Districts. Washington's ESDs evolved from county entities to intermediate school districts to our current consolidation into nine multi-county entities serving the 295 school districts of our state.

Many of the services ESDs provide have changed dramatically over the past 50 years. Gone are the days of videotape libraries and A/V equipment repair, replaced with new services and supports in areas such as student safety, mental health, threat assessment, and equity. ESDs were conceived to be nimble and adaptable to the changing needs and expectations of schools districts and local communities. Comparing this annual report with one from 10, 20, or 40 years ago would certainly demonstrate how the composition of our region and the needs of districts have changed over time.

What has remained the same is our commitment to being an indispensable partner to the students, educators, schools, and districts we support. We are grateful and appreciative of the continued opportunity to serve the 35 unique school communities of the NWESD's five-county region. Together We Can has been a guiding principle of the NWESD for the past 50 years and will continue to serve as our North Star for the next 50 years!

Larry Francois
NWESD Superintendent





Together We Can...
promote equity and excellence through leadership and service.

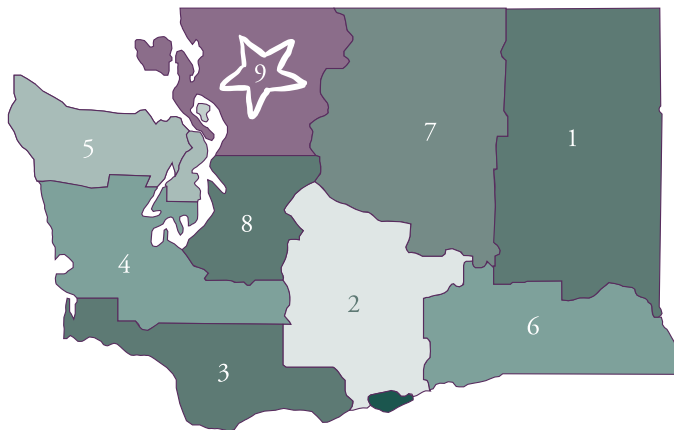




AESD ASSOCIATION OF
EDUCATIONAL
SERVICE DISTRICTS
Nine ESDs. One Network.
Supporting Washington's Schools and Communities.

Nine ESDs. One Network.

Supporting Washington's Schools and Communities.



1. NEWESD 101 - Spokane
2. ESD 105 - Yakima
3. ESD 112 - Vancouver
4. ESD 113 - Tumwater
5. OESD 114 - Bremerton
6. ESD 123 - Pasco
7. NCESD 171 - Wenatchee
8. PSESD 121- Renton
- 9. NWESD 189 - Anacortes**



SUPPORTING
295

School Districts in
Washington State

Educational Service Districts of Washington State

ESDs are a vital link between the public schools, private schools, and various state and federal agencies. This includes working closely with the Office of the Superintendent of Public Instruction (OSPI). In Washington State, there are **nine Educational Service Districts (ESDs)** that support a total of **295 school districts**. These nine ESDs comprise the **Association of Educational Service Districts (AESD)**. ESDs are critically necessary in Washington State, providing resources to facilitate the implementation of essential educational services and statewide education initiatives. The ESD structure was established in 1969 by the state Legislature to assure that quality services are available to all public and private schools in their respective service areas.



The NWESD Region At-a-Glance

35 School Districts:

- | | |
|----------------------|---------------------|
| 1. Anacortes | 19. Lynden |
| 2. Arlington | 20. Marysville |
| 3. Bellingham | 21. Meridian |
| 4. Blaine | 22. Monroe |
| 5. Burlington-Edison | 23. Mount Baker |
| 6. Concrete | 24. Mount Vernon |
| 7. Conway | 25. Mukilteo |
| 8. Coupeville | 26. Nooksack Valley |
| 9. Darrington | 27. Oak Harbor |
| 10. Edmonds | 28. Orcas Island |
| 11. Everett | 29. San Juan Island |
| 12. Ferndale | 30. Sedro-Woolley |
| 13. Granite Falls | 31. Shaw Island |
| 14. Index | 32. Snohomish |
| 15. La Conner | 33. South Whidbey |
| 16. Lake Stevens | 34. Stanwood-Camano |
| 17. Lakewood | 35. Sultan |
| 18. Lopez Island | |

5 Counties:

Island, San Juan,
Skagit, Snohomish,
Whatcom

Head count 2017-2018



NWESD also serves Tribal Education Compact Schools
(Lummi Nation Schools K-12) and Approved Private
Schools.



Making Connections: Linking Educators & School Districts with Resources

For our region, the NWESD provides a centralized point for services and information relevant to K-12 education in Washington.

By pooling services, the administrative and overhead costs are minimized. The result of this centralized approach is a highly efficient and cost-effective service delivery system to NWESD partner school districts.

Regional centralization also assures that school districts receive the services they desire and have a voice in how they are delivered. Minimal duplication of support services results in significant cost savings to the participating school districts, allowing the greatest use of taxpayer dollars for instructional purposes.

**NWESD & NWRDC
Supporting
Professional Learning**



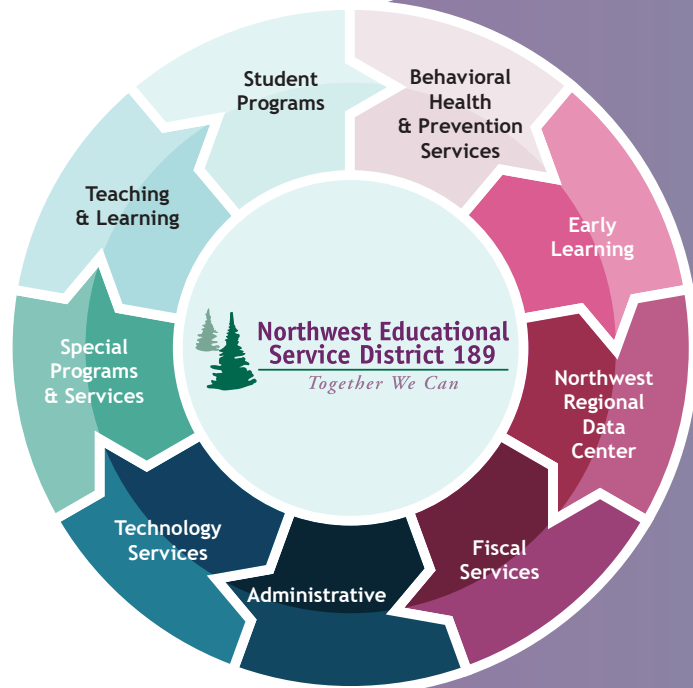
[training]

**8973
teachers,
attendees,
& participants**



[leading]

**533
classes &
workshops**



Did you know?

Our 35 school districts used the following % of NWESD services last year...

Administrative Services

7 available services

100% of districts used one or more services

Early Learning Services

7 Available Services

97% of districts used one or more services

Northwest Regional Data Center (NWRDC)

4 Available Services

94% of districts used one or more services

Extracurricular Student Programs

3 Available Services

78% of districts used one or more services

Behavioral Health & Prevention Services

20 Available Services

94% of districts used one or more services

Fiscal Services

4 Available Services

100% of districts used one or more services

Special Programs & Services

21 Available Services

100% of districts used one or more services

Teaching & Learning

19 Available Services

100% of districts used one or more services

Technology Services

3 Available Services

100% of districts used one or more services

For a complete list of NWESD programs and services used by districts visit: www.nwesd.org/2017-2018-annual-report



Student Demographics

Race & Ethnicity

60%
White

6.9%
Asian

20.6%
Hispanic/
Latino
(any race)

1.5%
American
Indian/
Alaskan

7.5%
Two+
Races

2.9%
African
American/
Black

0.6%
Native Hawaiian/
Pacific Islander

169,103
ENROLLMENT OCT. '17
169,432
ENROLLMENT MAY '18

Gender



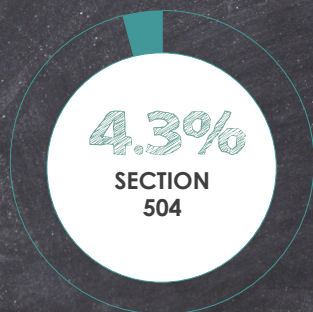
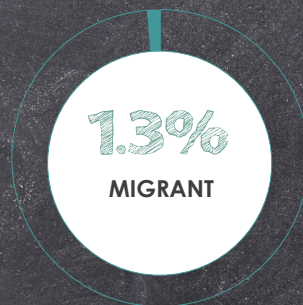
48.3%



51.7%



% of 169,432 NWESD Students



NWESD Goals

Prepare students
for college, career,
and citizenship.

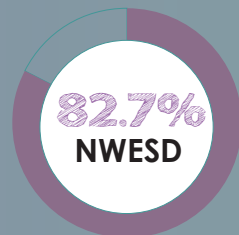
Provide quality
services that meet
our regional needs.

Foster educator
effectiveness to
assure equity and
opportunity for all
students.



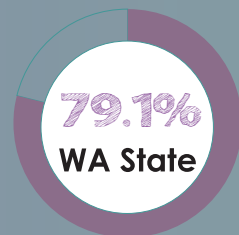
In Classrooms Across Our Region...

Graduation



NWESD High School Graduation Rate

▲ 2.1% (adjusted 4-yr graduation rate class of 2017)



WA State Average Graduation Rate

▲ 1.0% (adjusted 4-yr graduation rate class of 2017)

▲ ▼ % shows the difference between academic years 2016-2017 and 2017-2018. Data source: <https://bit.ly/2FWIhpR>

K-12 Test Results

Math (SBA results)



3rd gr: ▲ 0.4%

10th gr: 43.5%*

Language Arts (SBA results)



3rd gr: ▲ 1.7%

10th gr: 72.3%*

SBA The Smarter Balanced Assessment (SBA) helps to track student readiness for work or college. Washington adopted career-and-college-ready learning standards, which define what students should know and be able to do at all grade levels.

* Last year was the first measure of 10th grade.

See page 12 to learn how the NWESD and Washington State compare to other states in the Smarter Balanced Consortium.

Science (WCAS results)



5th gr: 56.2%

8th gr: 54.5%

11th gr: 33.2%

WCAS

Washington Comprehensive Assessment of Science (WCAS)

Kindergarten

WaKIDS The Washington Kindergarten Inventory of Developing Skills (WaKIDS) is a whole-child screening conducted during the first few months of kindergarten that helps to ensure a successful start to school and connect the key adults in a child's life.

WaKIDS Kindergarten Social-Emotional Readiness:

▲ 6.7%

WaKIDS Kindergarten Physically Ready:

▲ 7%

WaKIDS Kindergarten Literacy Ready:

▼ 2%



Smarter Balanced Assessment (SBA) Standings

The charts below show the percentage of students meeting the standard in English Language Arts (ELA) and Mathematics in the top four SBA Consortium states in 2018.

3rd Grade ELA

Washington	56%
NWESD	55%
New Hampshire	54%
Connecticut	53%
Hawaii	53%

5th Grade ELA

New Hampshire	60%
NWESD	60%
Washington	59%
Connecticut	58%
Hawaii	56%

8th Grade ELA

NWESD	60%
Washington	59%
New Hampshire	58%
Vermont	57%
Connecticut	56%

3rd Grade Math

Washington	58%
NWESD	57%
South Dakota	55%
Hawaii	55%
Connecticut	54%

5th Grade Math

North Carolina	53%
Washington	49%
NWESD	49%
Connecticut	45%
New Hampshire	45%

8th Grade Math

South Dakota	48%
Washington	48%
NWESD	47%
New Hampshire	46%
Connecticut	43%

The SBA Consortium includes: Bureau of Indian Education, California, Connecticut, Delaware, Hawaii, Idaho, Michigan, Montana, Nevada, New Hampshire, North Carolina, Oregon, South Dakota, U.S. Virgin Islands, Vermont, Washington. Data source: State SBA report cards

Reflections from Our NWESD 2018 Teacher of the Year

I was delighted by the opportunity to be the Northwest Educational Service District 189 Regional Teacher of the Year. It is rare for teachers to be publicly acknowledged in such a grand manner, and I am honored and humbled to have been the 2018 recipient.

Because I live in a rural community nestled in the western front of the Cascades and most of my students come from working class families, I joined Washington State's Rural Alliance, a group of educators almost exclusively from the east side of the state. Through this platform, I was able to share my students' stories and I received information and resources that have better helped me as a teacher. In addition, I spoke to several faculty groups about implementing positive behavior programs to students who have felt disenfranchised by the education system.

When I was originally nominated as Teacher of the Year, I debated whether to complete the application and sought the advice of one of my daughters. She convinced me to apply by admonishing me that my students deserved to know that their teacher was the very best possible and that it would boost their credibility as they ventured forth into the world. It might sound cliché to say that I sought the honor for my students, but it is true! Although there have been many wonderful results from my receiving this award, the most treasured outcome was seeing my students gain a deeper respect for the education profession. I have two former students who are currently studying to be English teachers. This is significant in a school where we graduate only 30 students each year.

And finally, my advice to young people considering a career in education... I am proud to be a teacher and am gratified that the state of Washington values teachers. **This is a grand time to be an educator. We need vibrant and passionate teachers to join forces with us entering classrooms. You can be a part of a career where you will not only make a substantial contribution to society, but also to the individuals you teach! We want you! We need you!**

Linne Clarke
2018 NWESD Teacher of the Year

Follow Linne on Twitter @linne_haywood



Glacier Peak Institute founder Oak Rankin (left), and Linne Clarke (right) receiving an award from WASA for student achievement.



Mandy Manning, National Teacher of the Year, visited Darrington High School for an entire day. When announced that Mandy received the national honor, Linne's students felt as though they had met a rock star.



Migrant Education Program (MEP) Supporting Western Washington

Our goal is to ensure that all migrant students reach academic standards and graduate, preparing them for responsible citizenship, further learning, and productive employment.



22 MIGRANT PROJECT SCHOOL DISTRICTS

4,326 TOTAL IDENTIFIED MIGRANT STUDENTS

Statewide Collaboration & Coordination

- Migrant Data Analysis
- Customized ESD Networks
- Technical Assistance
- Summer School, Intersession & Summer Academy Programs
- Advocacy and Outreach / Migrant 101
- Parent Involvement Strategies / Parent Advisory Council (PAC)
- Support to Non-Project Districts
- Collaboration with OSPI Content Area Learning & Teaching Staff
- Professional Learning for District Leadership, Teachers, and Paraeducators in ELA and Math
- Professional Learning in Language Development & Language Acquisition
- School Readiness Program Models
- Migrant Graduation Specialist Support
- Health & Out-of-School Youth Support



Providing Threat Assessment & School Safety Training Opportunities

123 ATTENDEES

First School Safety Summit

11 ATTENDEES

Comprehensive School Safety

147 ATTENDEES

Assessing Student Threats
in the School: Level 1 (3 sessions)

7 ATTENDEES

Situational Awareness Training
for Administrators and Educators

5 ATTENDEES

The Essential School
Safety Toolbox

22 ATTENDEES

School Resource Officer Training

23 ATTENDEES

Meeting the Challenge:
Critical Incident Response,
Readiness & Recovery

335

PARTICIPANTS TRAINED
IN SAFETY COURSES

30

NWESD SCHOOL
DISTRICTS REPRESENTED
AT THESE TRAININGS





Climate Science Learning Opportunities

ClimeTime is a statewide initiative of the Washington Governor, the Washington State Legislature, OSPI, and the Association of Educational Service Districts (AESD). Participation is paid for by the Washington State Legislature's 2018 Climate Science Proviso.

The following NWESD climate science learning opportunities were created for teachers across multiple grade levels and designed to intentionally address underserved populations:

- Indigenous Ways of Knowing Climate Science in the NWESD Region
- Field Experience in Climate Science
- All I Need to Know to Understand Climate Science I Learned in High School Chemistry
- OpenSciEd Piloting
- Collaboration for Ambitious Science Teaching and Learning (CASTL)
- Stories of Us and the World: How We See Ourselves in Relation to Our Environment
- Piloting K and 3rd Grade Amplify Kits
- Climate Science for Pre-K and K

In partnership with the following community-based organizations:

Snohomish Conservation District, Padilla Bay National Estuarine Research Reserve, Whatcom County Collaborative Project: Wild Whatcom, Garden of the Salish Sea Curriculum, Common Thread, Nooksack Salmon Enhancement Association, North Cascades Institute, RE Sources for Sustainable Communities

The NWESD Fellows At-a-Glance

The Fellows' Network is a group of instructional leaders convened by the Office of Superintendent of Public Instruction (OSPI) and the Association of Educational Service Districts (AESD) to support district and community implementation of state learning standards in Mathematics, English Language Arts, Science, and Early Learning Guidelines.

30
36
31
16

English Language Arts Fellows

Math Fellows

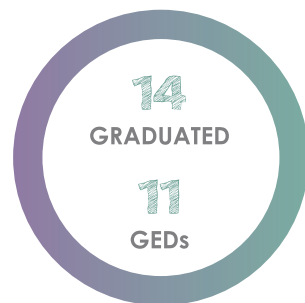
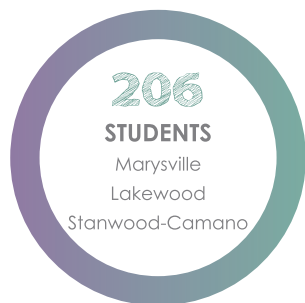
Science Fellows

Early Learning Fellows



The NWESD Cooperative Student Programs

Open Doors Youth Reengagement Programs



Detention Centers

Skagit

137 Students*
3 GEDs

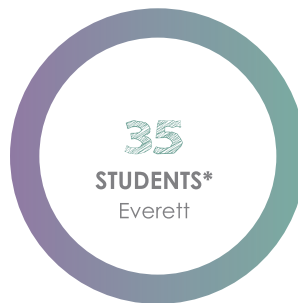
Snohomish & JETS-PASS

401 Students*
14 GEDs through the
JETS/PASS Program

Whatcom

181 Students*

Northwest Regional Learning Center (NRLC)



Discovery Programs

Skagit

34 Students*
2 Transitioned to their
home districts

Snohomish

37 Students*
3 Transitioned to their
home districts

Whatcom

40 Students*
3 Transitioned to their
home districts

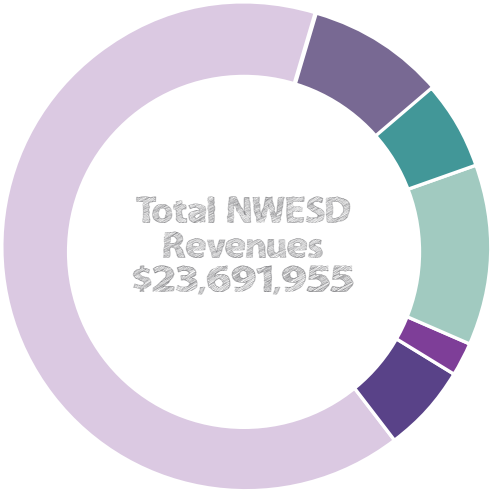
*Unduplicated numbers, students may attend certain programs multiple times during a school year.



Return on Investment

ESD Funding Unlike local school districts, which receive the majority of their funding from the state, ESDs are largely self-supporting organizations sustained by competitive grants, cooperatives, and fees for service.

“Core” funding – the amount allocated by the state – totals only 2% of NWESD funding. Core funding is based on the number of school districts and the size of the geographic region served. For the NWESD, core funding increased from \$519,043 in 2016/2017 to \$584,831 in 2017/18.



- 9% Other Program Payments \$2,088,774
- 6% Local Sources \$1,387,435
- 11% State Grants \$2,746,944
- 2% Core Funding \$584,831
- 6% Federal Grants \$1,372,614
- 66% Cooperative Programs \$15,511,357

Core funding allocated to the NWESD totaled \$584,831 and accounted for approximately 2% of annual revenue sources.

The NWESD core funding allocation was leveraged to provide \$23,691,955 in services for students in the region's 35 school districts.

For every \$1 of core funding provided to the NWESD, \$39.51 dollars of service is provided to students in the region.



Board of Directors

Charles Crabtree

District 1: Bellingham,
Meridian

Dr. Jack Thompson

District 2: Blaine,
Ferndale, Lopez Island,
Lynden, Mount Baker,
Nooksack Valley, Orcas
Island, San Juan Island,
Shaw Island

Mark Venn

District 3: Anacortes,
Burlington-Edison,
Concrete, Conway,
Darrington,
LaConner, Mount
Vernon,
Sedro-Woolley

Claudia Talmadge

District 4: Coupeville,
Lakewood, Mukilteo,
Oak Harbor, South
Whidbey, Stanwood-
Camano

Dr. Alan Erickson

District 5: Everett

Cory Duskin

District 6: Arlington,
Granite Falls, Index,
Marysville, Sultan

Claudia Buxton

District 7: Edmonds,
Mukilteo

Gordon W. Griggs

District 8: Edmonds,
Mukilteo

Merle Kirkley

District 9: Lake Stevens,
Monroe, Snohomish

Leadership

Larry Francois: Superintendent

David Forsythe: Assistant Superintendent
for Operations

Pam Estvold: Assistant Superintendent
for Teaching & Learning

Lisa Matthews: Assistant Superintendent
for Finance & Compliance

Kyle Bunker: Director of Technology Services

Jodie DesBiens: Director of Behavioral
Health & Prevention Services

Shirley Cutshall: Director of Special Programs

Sarah Southard: Director of Early Learning

Lynn Roediger: Director of Northwest Regional
Data Center





**Northwest Educational
Service District 189**

Together We Can



1601 R Avenue Anacortes, WA 98221

p. 360-299-4000

f. 360-299-4070

www.nwesd.org