

Fall 2018

education CONNECTION

Migrant Education

NASA Space Camp &
Improving Dental
Access | 7

Early Learning

*The State of Children &
Families Report* | 8 -9

Climate Science Education

Focus on
Climate Science in
2018-2019 | 10-11



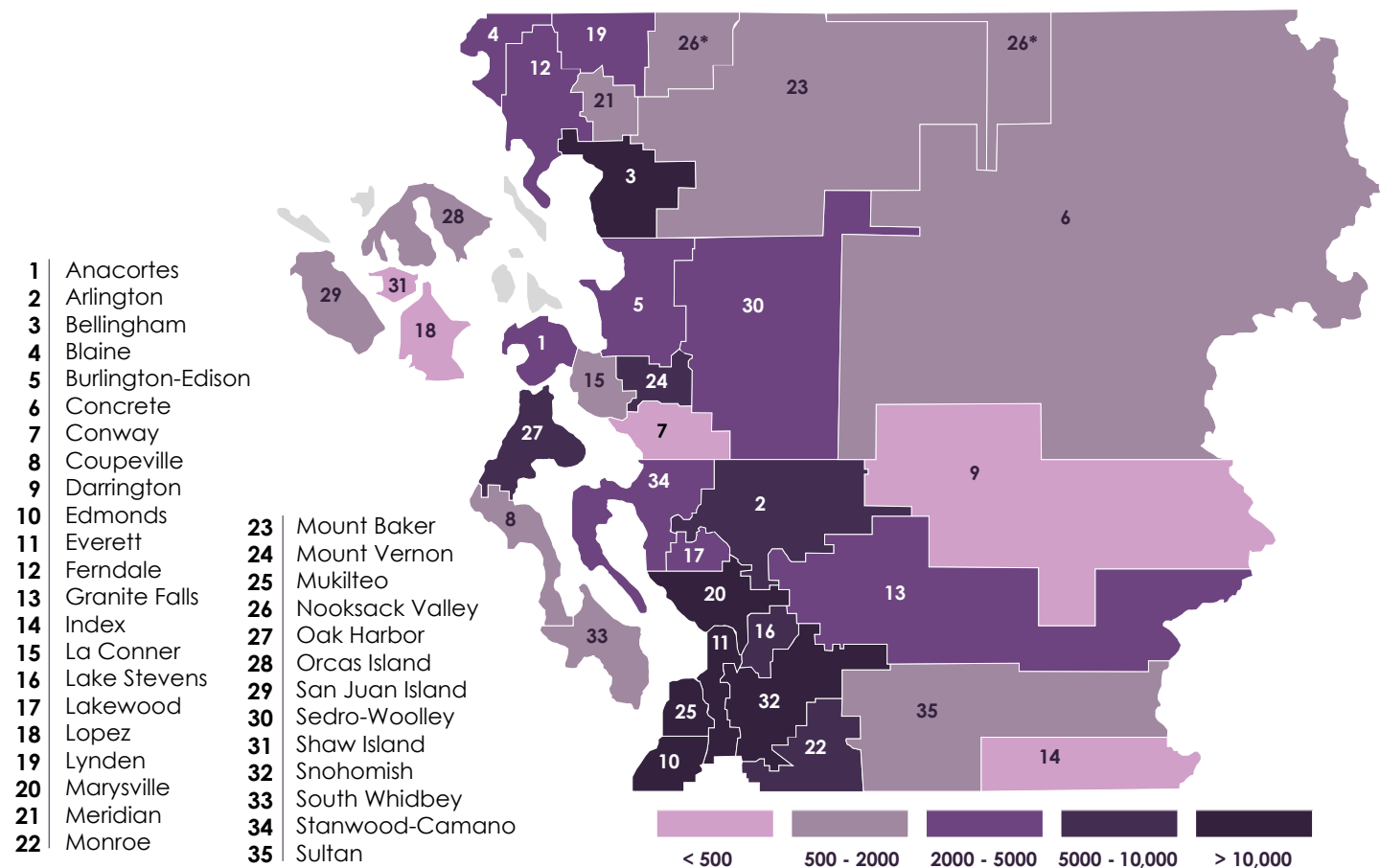
Together We Can...

Table of Contents

4	A Note from Our Superintendent	8	Early Learning in the NWESD Region
5	Welcome New Regional Superintendents	9	Northwest Early Learning Champion 2018
6	2019 Regional Teacher of the Year	10-11	Focusing on Climate Science in 2018-2019
7	Migrant Education: NASA Space Camp & Improving Dental Access	12-15	Workshops & Classes

NWESD Region Districts

Head Count 2017-2018



NWESD ALSO SERVES TRIBAL EDUCATION COMPACT SCHOOLS (LUMMI NATION SCHOOLS K-12) AND APPROVED PRIVATE SCHOOLS.

To register for classes >> pdenroller.org/nwesd/catalog

Fall 2018 Workshops & Classes (September-December)

Date(s)	Title	Instructor	Event	Page
9/25/18	NGSS 101: Deep Dive into the Next Generation Science Standards	Brian MacNevin	78493	14
9/27/18	State of Children & Families Early Learning Leadership Brunch 2018	Sarah Southard	78441	12
9/27/18	WA-AIM General Administration Only (User)	Kristi Facilitator	78454	13
9/27/18	WA-AIM General Administration + Train the Trainer	Kristi Facilitator	78452	13
9/28/18	WA-AIM General Administration Only (User)	Kristi Facilitator	78455	13
9/28/18	WA-AIM General Administration + Train the Trainer	Kristi Facilitator	78453	13
10/4/18, 10/18/18, 11/1/18, 11/15/18, 11/29/18, 12/13/18	Principles of Applied Behavior Analysis	Robin Talley	78393	13
10/4/18-10/5/18	Facilitating Adult Learning: Skills & Strategies Training	Laura Lipton	78404	14
10/11/18	NGSS 102: Deeper Dive into the Next Generation Science Standards	Brian MacNevin	78502	14
10/16/18	Approaching Difficult Conversations	Greg Abell	78472	13
10/23/18	NGSS 101: Deep Dive into the Next Generation Science Standards	Brian MacNevin	78494	14
10/29/18-10/31/18	Introduction to Grant Writing	Joyce Lynn Garrett	78329	12
11/14/18-11/15/18	Universal Design for Learning (UDL)	Nicole Tucker-Smith	78520	15
11/28/18	NGSS 101: Deep Dive into the Next Generation Science Standards	Brian MacNevin	78495	14
12/6/18	NGSS 102: Deeper Dive into the Next Generation Science Standards	Brian MacNevin	78503	15
12/18/18	NGSS 101: Deep Dive into the Next Generation Science Standards	Brian MacNevin	78496	14

Saturday, October 6, 2018

Renton, WA





A Note from our Superintendent

Larry Francois, Anacortes

It's back to school for the Northwest Region districts! I hope many of you were able to sneak in some vacation time during the summer months and were able to get away for some much needed rest and rejuvenation.

This new school year brings a flurry of activities and events that may fundamentally impact our collective work for years to come. Like districts across the state, those in the Northwest Region are grappling with the McCleary "fix," trying to navigate this uncharted world. They are striving to meet the needs and expectations of their communities, taxpayers, and staff while remaining centered on their primary mission to provide a powerful education to each student. The Washington State Supreme Court has declared that the Legislature has met the McCleary charge, and time and experience will now determine whether that effort was sufficient.

The other Supreme Court – the US Supreme Court – has also been busy influencing our work. The Court's upholding of the Administration's travel ban challenges all districts – particularly those with significant migrant populations – to meet their constitutional mission to serve all kids and families regardless of immigration status in an increasingly tense, anxious, and uncertain environment. The Janus ruling changes the landscape of union representation and brings potentially significant changes to a state with a traditionally strong and vocal public sector union presence. Additionally, the retirement of Justice Kennedy – a longtime swing vote on an increasingly polarized Court – adds uncertainty to future court decisions with profound implications in all walks of life.

School safety continues to loom large for every school, in every district, and in every community. Our schools know that school safety goes far beyond, and much deeper than, the high profile shootings that dominate the news. Mental health, substance abuse, poverty, neglect, depression, lack of available services, and the dark side of social media all combine to threaten the safety and security of students and staff. Schools are increasingly the social service agencies of last resort and are often not well-equipped to play this role. However, dedicated educators will continue to do the best they can.

Likewise, 134 schools across our region, identified under the newly implemented Washington School Improvement Framework, will redouble their efforts in the coming months to address persistent and challenging achievement and opportunity gaps. Identified schools will benefit from newly available resources and supports – including many in partnership with the NWESD 189 – but know that they must develop new mindsets, skills, and approaches to meet each student's needs.

However, if you've dedicated yourself to public education because you fundamentally believe in our collective power to change lives and better our world, would you really have it any other way? I know I wouldn't. All that can seem to stand in our way makes the small, incremental victories that much more rewarding.

Best wishes for success and joy in the coming year!



Larry Francois
NWESD Superintendent

Welcome

New Regional Superintendents



Kari McVeigh
San Juan Island
School District

Karen (Kari) McVeigh has been named the Interim Superintendent of the San Juan Island School District for the 2018-2019 school year. Kari has over 40 years of public education experience starting as an elementary teacher and culminating as a superintendent.

A native San Franciscan, Kari started her career as a fifth grade teacher in Nevada. Following her eleven years as an elementary teacher, Kari was an assistant principal for six months and then principal of two elementary schools for a total of twelve years. After twelve years in principalship, Kari assumed the position of Assistant Director (and then) Director of the Whole School Change for Boston Schools. Moving to Southern California she held positions as assistant superintendent and later superintendent at two separate K-12 schools for five years.

Kari states that her top priority as Interim Superintendent for San Juan Island School District is “to build positive relationships within and outside of our school communities.” Kari and her wife, Cynthia, moved to San Juan Island in 2016 and like to spend time enjoying island life with their two dogs, Raleigh and Gracie.



Steve King
Coupeville
School District

Coupeville School District is proud to have Steve King as Superintendent. He was the Assistant Superintendent in the Oak Harbor School District, entering this new position with a wealth of educational leadership knowledge, a proven record of guiding high performing schools and an active interest in living in a small community.

Originally from Friday Harbor, Steve started his education career as a PE and social studies teacher in the Mount Baker School District in Deming, with approximately 1,900 students. In 2003, he became the Vice Principal and then the Principal at Mount Baker High School. He moved to Oak Harbor in 2014 to become the Assistant Superintendent where he has been instrumental in many of the innovative and progressive changes within the Oak Harbor School District.

As a positive, energetic, thoughtful leader, Steve is ready to build upon the successes that Coupeville School District has achieved and move it into a new era of learning and growth. Steve is replacing outgoing Superintendent, Jim Shank, who has taken a superintendent position in the Cassia School District in Idaho.



Jason Thompson
Marysville
School District

This past May, Jason Thompson was named Interim Superintendent of the Marysville School District for the 2018-19 school year, replacing Dr. Becky Berg who retired at the end of the 2017-18 school year. This was a natural transition as Jason had previously stepped into the role of deputy superintendent of the Marysville School District and served as acting superintendent since January 2018.

Jason states, “What I have always loved about Marysville and Tulalip is the passion of its residents. No matter where you come from, your beliefs, or your solution to a problem, everyone wants Marysville to be the very best it can be. It is important that we all remember this as we work together to tackle our shared challenges and grow our success.”

Some of Jason’s career highlights include three years as the assistant principal and three years as principal of Pullman High School in Pullman, Washington. During his tenure, the school was named a Blue Ribbon School by the U.S. Department of Education, and recognized as one of the highest performing schools in Washington.

Jason also served for four years as Superintendent at the Newport School District when it successfully passed a three-year Maintenance and Operations Levy with the highest approval rating in recent history.

Jason earned both his B.A. in History/Secondary Education and his M.Ed. from Whitworth University. He also went through the Washington State University (WSU) Certification Program and the Leader for Tomorrow’s School.



2019 Regional Teacher of the Year

Robert Hand, Mount Vernon High School



Mount Vernon High School teacher Robert Hand was named the Regional Teacher of the Year by the Northwest Educational Service District 189 (NWESD). Mr. Hand was selected from a competitive group of teacher nominees from across the NWESD Region.

The Regional Teacher of the Year program recognizes educators for their excellence in teaching while giving them a platform to advocate for educational issues of particular interest to them. Some other Regional Teacher of the Year duties include:

- Contributing to a collection of teacher tales to be shared with legislators, educational leaders, and other stakeholders called *From Seed to Apple*.

- Traveling the state to share expertise with community groups, businesses, government officials, and future teachers.

Currently serving as a Family and Consumer Services Instructor at Mount Vernon High School in Mount Vernon, Mr. Hand is described as “having the ability to challenge students, build relationships with students, and to help many students develop the skills that they need to be successful in high school and beyond,” by Rodrick Merrell, MVHS Principal.

In his Teacher of the Year application, Mr. Hand noted that he is driven to draw connections between schoolwork, family, culture, and community in the classroom, citing these elements as one of the main reasons he chose to teach Family and Consumer Sciences. He went on to write, “One of the major issues I see in public education today is the lack of diversity in our workforce.... I have always been drawn towards issues of race and ethnic relations.... My whole life I have always had the privilege of having all of my teachers look like me. It was easy for me to see myself as a teacher because I could see my reflection in every teacher I ever had. Diversifying the teacher workforce has to start somewhere,

and it starts with my kids.” – Robert Hand.

“Robert focuses his incredible energy on making MVHS a better place. He serves on our District Equity Team, the MVHS Student Engagement and School Culture Committee, and is the advisor for our Social Justice Club. Robert’s passion for students, for equity, and for the power of an individual to make a difference in a community is unparalleled.” – Rodrick Merrell, MVHS Principal

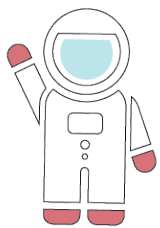
NWESD’s Assistant Superintendent of Operations, David Forsythe, helped guide the selection process of the recipient of NWESD’s Regional Teacher of the Year. “Robert Hand rose to the top of a competitive field with inspirational letters from his students and colleagues,” said Forsythe. “A lesson on distracted driving in his Life After High School Class impressed the selection team with how it engaged and influenced all students.”



“My whole life, I have always had the privilege of having all of my teachers look like me. It was easy for me to see myself as a teacher because I could see my reflection in every teacher I ever had. Diversifying the teacher workforce has to start somewhere, and it starts with my kids.” - Robert Hand

“When Given Wings, Summer Learning Takes Flight”

The Burlington-Edison School District Pilots NASA Camp



For many of our students in Western Washington, summer is a magical time. It's a good-bye to the rainy days of spring and a hello to sunshine. The school year's Monday-through-Friday rhythm is released into almost three blissful months of freedom, adventure, and play. However, for many of our migrant students, summer is often something much different. It signals a time to move, to follow the summer harvests—a heavy mix of tough good-byes and intimidating hellos to unfamiliar places, unfamiliar people. It is a season that is marked by overwhelming change and extraordinary adjustment. In the Migrant Education Program, we also know that summer is a critically important stretch during which we can provide much needed innovative academic support to our migrant students, helping to halt the summer slide and eliminate opportunity gaps.

This past summer, in concert with OSPI, the Northwest Earth and Space Sciences Pipeline (NESSP) and NASA Science Mission Directorate, the Burlington-Edison School District championed a pilot of its first-ever NASA Summer Camp. The weeklong camp engaged elementary students in learning about rocketry and flight and how the wonderment of our universe's ever-developing pieces have inspired our country's rich history of space exploration.

Clint Weckerly, NWESD Migrant Academic Coordinator said, “Getting to support Burlington-Edison staff in this ground-breaking work with students was such a gift. The B-E teaching staff engaged students wholeheartedly and facilitated the camp's lessons in ways that opened minds, sparked ideas and gave space for students to laugh, learn and bond not only with their learning, but with each other. During one of the lessons, I checked in with a student and asked her how things were going. She responded with a sparkling smile and told me, “This is SO exciting! You

know—I want to be an astrophysicist someday...I'm GOING to be an astrophysicist some day!” As I looked back into her eyes and saw her sense of wonderment, it was clear for this student that the sky is the limit.

This year Burlington-Edison inspired a classroom of over two dozen students, and in years to come, we hope to see this and projects like it not only expand, but flourish across our region. After all, in the Migrant Education Program, we stand ready to give hope wings, to always help our students reach for the stars.



For more information, contact:
Clint Weckerly,
Migrant Academic Coordinator
cweckerly@nwesd.org

Improving Dental Access for Migrant Students



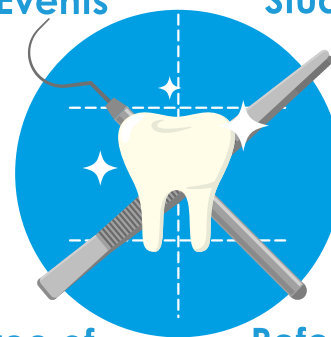
Miguel Rivas, Title-LAP Reading Specialist and students

NWESD provided coordination and support to the 2018 Migrant Summer School staff in piloting, for the first time, four dental screening events at Bellingham, Sedro-Woolley, Mount Vernon and Burlington-Edison school districts. Through partnership contracts with Unity Care Northwest and Sea Mar Community Health Centers, 116 migrant students received dental screenings and individual dental hygiene instruction this summer. The Migrant Education Health Program (MEHP) is a referral-based,

collaborative partnership model that helps eligible migrant students and their families gain access to comprehensive health at no cost to the family. The MEHP is designed to help migrant children overcome health-related problems that inhibit their ability to succeed in school or in other educational programs. These opportunities would not have been possible without the tireless work of the Migrant Summer School staff in each of these districts. We look forward to expanding this program in upcoming years!

4 Dental Screening Events

116 Migrant Students



Free of Cost to Migrant Families

Referral-Based, Collective Partnership



Early Learning in the NWESD Region

“Coming Home”



“There’s huge power in goal setting and having a peer who’s been through it, you can’t do it on your own.”

Mary lives on San Juan Island and is a single mom to six-year-old Olive. She runs her own cleaning business that supports her family and is breaking ground in August on her first home with the help of Homes for Islanders.

Six and a half years ago, Mary was homeless. She was nine months sober and had just returned to San Juan following a six-month inpatient treatment program with her infant daughter. Mary worked with San Juan County Health and Community Services to enroll in the Compass outpatient mental health treatment program and the Tenant Based Rental Assistance Program. Olive went to preschool with a scholarship from the Family Umbrella Group while Mary worked and got her life back on track. Mary also focused on strengthening her relationship with her daughter, attending the parent baby playgroups

and parenting classes at the Family Resource Center. In addition to these supports, an advocate from the Parent Child Assistance Program visited Mary monthly for three years. Having an advocate helped her set goals and Mary stated, “There’s huge power in goal setting and having a peer who’s been through it, you can’t do it on your own.”

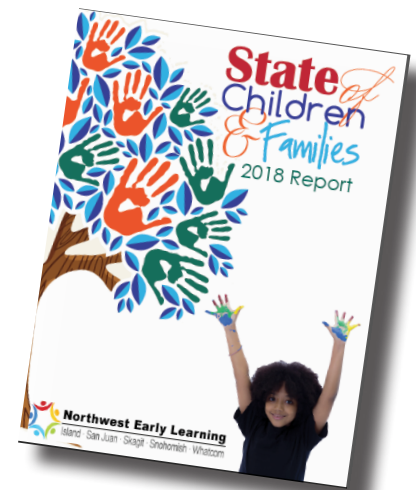
The programs that came together around Mary offered her a chance to make meaningful changes in her life and be successful in her recovery. Mary dreams now of mentoring kids ages 10-14 as she was living on the streets by age 12. She understands how lost a child can feel. Her motto, “If my problems have brought me to prayer, they have served a purpose.” Mary’s goal now is to give back to the community that has supported her in so many ways.

State of Children & Families 2018 Report

The *State of Children and Families* community report was created to tell the story of young children and families in our region. It helps to inform policy, funding, and resource allocation decisions at all levels.

Organized by the Washington Early Learning Plan *Ready Frames*, this report contains demographic and programmatic data about children, families, professionals, schools, and systems in our region.

Visit the NWESD Early Learning website to view the report online:
www.nwesd.org/2018-state-children-families-report



The stories on pages 8-9 were reprinted with permission from the “State of Children and Families Report” created by the Northwest Early Learning Coalition in the NWESD region.

Northwest Early Learning Champion 2018

Bess Windecker-Nelson



Bess Windecker-Nelson has been a shining star for children, families and the field of early childhood in our region and state. As a mother of three and a therapist with a PhD in Child and Family Relations, Bess brings a unique set of skills to our region and informs public policy on multiple levels. In the worlds of early childhood and family support, it is a rare gift to find someone who loves working with families, data collection, and public policy equally. In Island County, Bess advocates for families as a co-founder and convener of Partners for Young Children (a broad coalition of organizations that serve children and offer a seamless, coordinated spectrum of services), a member of the original Island County Children's Commission and a founding member of the Northwest Early Learning Coalition. She coordinated the prenatal through third grade alignment (P-3) efforts to help children be better prepared

for school and life by engaging key partners in Island County school districts and early learning programs to come together in new ways and support literacy across early development. Her work for families has included a decade of coordinating Children's Day, founding the first Play and Learn group, facilitating an Island-wide Universal Developmental Screening initiative and providing individual parent-child support. At the regional level, Bess was instrumental in creating the State of Children and Families report, which is a critical source of regional information on the status of early learning and family stability for educators, service providers and public policy makers and is recognized as filling the need for advocacy across the state. Bess has a gift for bringing people together and making things happen; families in northwest Washington are better because of her compassionate leadership.

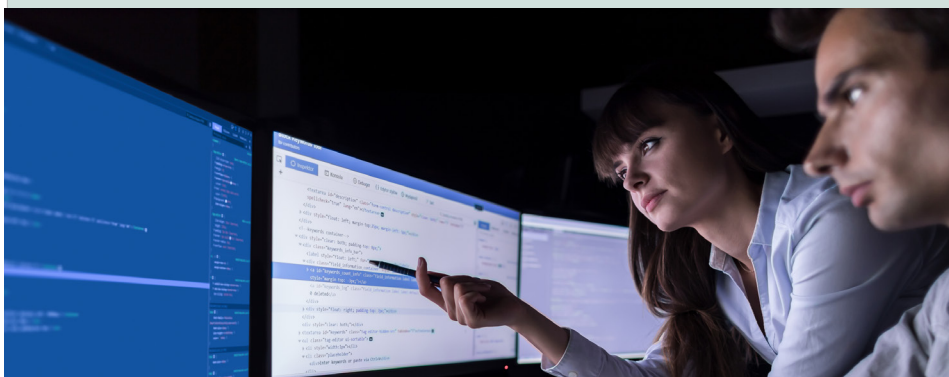
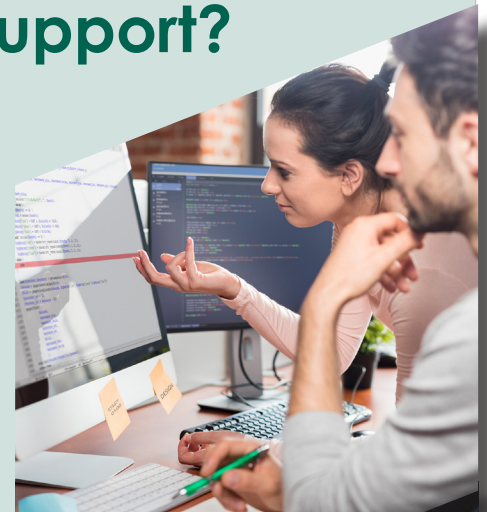
Does your school need Tech Support?

NWESD can help...

With more than 20 years of experience managing technology departments for both large and small organizations, we specialize in teamwork and inclusion, and we communicate with all stakeholders to accomplish the goals that each district, department, and school has set.

We can help to seamlessly maintain your school system's infrastructure including authentication, security, and backups without disrupting staff and student user experience. Operations work is often software based and can be done remotely with little to no on-site time required.

Questions? Kyle Bunker, kbunker@nwesd.org



CLIME TIME

CLIMATE SCIENCE LEARNING



Focusing On Climate Science in 2018-2019

“We’re the first generation to feel the impact of climate change and the last generation that can do something about it.” - Governor Jay Inslee

The 2018 Washington State Legislature heard Governor Jay Inslee when he said, “We’re the first generation to feel the impact of climate change and the last generation that can do something about it.” Part of “that something” is \$4,000,000 of the general fund to be spent between July 1, 2018 and June 30, 2019, by ESDs and community-based organizations to train teachers of science in the 2013 Washington State Science Learning Standards (WSSLS) also known as Next Generation Science Standards (NGSS) which include standards around climate science.

Locally at Northwest Educational Service District, we will approach climate science for our educators in a multi-faceted approach. Our project will be implemented statewide as a collaborative effort by the Association of Educational Service Districts (AESD) to improve systems of support around climate science education for schools identified for targeted and comprehensive supports. We will localize our work in conjunction with our regional community based organizations that are already providing climate science curricula in a field-centered, experiential manner. The climate science project will enhance the work of NWESD 189 science educators, building climate science into our work with Science Fellows, the Science Leadership Network, the Collaboration for Ambitious Science Teaching and Learning (CASTL), and the NWESD Science Materials Center Cooperative. We also plan to work with our local tribes to expand on existing Tribal work by helping teachers understand indigenous ways of knowing and engaging in science as well as to work with teachers to develop some P-K climate science activity stations for young learners.

The NWESD climate science learning opportunities provide access to teachers across multiple grade levels and have been designed to intentionally address underserved populations in a number of ways. The universal outcomes of this project are to:

- Increase teacher understanding of climate science in the context of the WSSLS.
- Improve ability of teachers to deliver three-dimensional instruction as defined by the WSSLS, focused on science and engineering practices as they support the core ideas of climate science.

For more information contact:

Joanne Johnson: jjohnson@nwesd.org or
 Brian MacNevin: bmacnevin@nwesd.org

NWESD Climate Science Education Projects

**Professional Development - Grade Level	
1. Indigenous Ways of Knowing Climate Science in the NWESD Region	
2. Field Experiences in Climate Science	
3. STEM Speakers Lecture Series	
4. OpenSciEd Piloting	
5. CASTL	
6. NGSS 101B: Engineering for Climate Science in Elementary Classrooms with Migrant Students	
7. Piloting K and 3rd Grade Amplify Kits	
8. Climate Science for K and Pre-K	

K-5 Middle School High School

****This funding provides learning opportunities for all grade levels. The key (above) paired with the descriptions on page 11 will help you to find appropriate climate science learning opportunities for your grade level.**

The NWESD is eager to partner with the following community-based organizations who were also awarded climate science education grants:

Snohomish Conservation District

Padilla Bay National Estuarine Research Reserve

Whatcom County Collaborative Project:

- Wild Whatcom
- Garden of the Salish Sea Curriculum
- Common Threads
- Nooksack Salmon Enhancement Association
- North Cascades Institute
- RE Sources for Sustainable Communities

NWESD Climate Science Education Project Summary

1. Indigenous Ways of Knowing

Climate Science in the NWESD Region

Including staff and STEM teaching tools from the UW Institute for Science and Math Education and our community based partners, we will work with NWESD school districts with high percentages of Native American students and migrant students around indigenous ways of learning climate science. Our essential question is, how can we change our instruction in climate science to include indigenous ways of knowing? Teachers will come together to learn, try out their learning with their students and come back together in critical friends groups to understand and share their learnings.

2. Field Experiences in Climate Science

The NWESD is uniquely situated to take advantage of the locale and expertise of our neighboring community-based science education organizations including Nooksack Salmon Enhancement Association, North Cascades Institute, Padilla Bay National Estuarine Research Reserve, the Snohomish Conservation District, and the Whatcom County Collaborative Project. Partnering with NWESD will allow climate science to be part of field study curricula moving forward. These efforts will focus on preparing teachers with climate science instruction for their students' pre and post field experience and allow teachers to get into the field to share the same experiences as their students.

3. STEM Speaker Lecture Series

This project makes climate science learning flexibly available to high school teachers -- most of whom in Washington State are not climate science specialists. NWESD will facilitate a three-part speaker series, facilitating climate scientists sharing cutting-edge research in both the north and south end of our region. Each lecture will be offered as a single event so that teachers can avail themselves of specific speakers and/or topics. As the speaker concludes, NWESD will provide facilitated discussions with the climate scientist and the high school teachers to highlight connections to content standards and solidify the understanding of the climate concept. Look for registration information on our website coming soon.

4. OpenSciEd Piloting

Eight teachers in our region will pilot the OpenSciEd Grades 6-8 Open Education Resources (OER) materials developed with support from the Carnegie Institute. Eventually encompassing a K-12 suite of OER instructional materials aligned vision of the Next Generation Science Standards and evaluated for effectiveness, we anticipate this resource and the teachers trained in its use will be an invaluable support to our region.

5. CASTL

The CASTL project expands the work of the Partnership for Ambitious Science Teacher Leaders (PASTL) and Math Science Partnership (MSP) into new schools and into climate science. Facilitated by PASTL alumni teacher leaders and PASTL faculty, new teachers engage as learners in three-dimensional learning around a climate science phenomenon. Our focus will incorporate climate science and related NGSS Performance Expectation's into the work for the year. A summer institute (August 2018) will induct two new teacher cadres into the work, and during the school year they will join with PASTL alumni in three reflective planning days.

6. NGSS 101B: Engineering for Climate Science with Migrant Students

This learning opportunity is targeted for teachers who teach migrant students. This course is similar to NWESD NGSS 101; however, it will provide a deliberate focus on climate science disciplinary core ideas (DCIs), engineering and specific connections to best practice for migrant students. This one-day course will be offered five times throughout the 2018-19 school year. Please visit www.nwesd.org to register or contact **Nancy Menard: nmenard@nwesd.org**.

7. Piloting K and 3rd Grade Amplify Kits

Focusing on schools identified for target and comprehensive support, the NWESD Science Materials Center (SMC) Cooperative will recruit K and 3rd grade teachers from these schools to pilot climate science kits from Amplify Science. SMC school districts have nominated teachers who will receive professional development in the fall of 2018.

8. Climate Science for Pre-K and K

The NWESD Early Learning Department will work with Pre-K and kindergarten teachers to design learning opportunities that align with NGSS Kindergarten Standards and help Pre-K and K students develop content knowledge and science and engineering practices that support core climate science ideas through play. Teachers will be recruited to serve on the design team. The teachers will pilot these modules in their classrooms and then reconvene to make adjustments to the modules. Professional learning opportunities will be offered in the spring of 2019. Kindergarten teachers interested in serving on the design team please contact **Sarah Southard: ssouthard@nwesd.org**.



early learning

workshops and classes register >> pdenroller.org/nwesd/catalog

State of Children & Families

Early Learning Leadership Brunch

Presenter: Sarah Southard
Facilitator: Anita Garcia-Holzemer
Registration Fee: \$35
Location: Swinomish Casino Event Center
Date: 9/27/18
Time: 9:30 AM - 12:00 PM

State of Children & Families
Early Learning Leadership Brunch 2018
Event ID: 78441

Please join NW Early Learning and community stakeholders from across the region to consider how current research and local data can inform policy, practice, and community norms to strengthen outcomes for children and families. This year's keynote speaker, Victor Rodriguez, is currently a program manager at the Tacoma-Pierce County Health Department. Victor spent most of his life in Skagit County and is the son of two Mexican immigrant farmworkers. His professional background includes community organizing, social work, and public health working with issues related to child, youth, and family health as well as social justice.



grants

Introduction to Grant Writing

Event ID: 78329

Participants will have three days of learning the basics of grant writing. The first day will be spent identifying a fundable project, finding a funder, parsing a request for proposals (RFP), exploring the basic components of a grant, and reading examples of well-written proposals. On the second day, participants will explore all aspects of technical writing and have an opportunity to develop a narrative that includes all the basic components of the grant. Participants will also develop a simple budget and evaluation plan. The third day will focus specifically on preparing state and federal grant applications. Special attention will be given to parsing the RFP and developing more complex narrative responses.

Presenter: Joyce Lynn Garrett
Facilitator: Paula Molitor
Clock Hours: 22.5
Registration Fee: \$250
Location: NWESD
Dates: 10/29/18, 10/30/18, 10/31/18
Time: 8:30 AM - 4:00 PM





special programs

workshops and classes register >> pdenroller.org/nwesi/catalog

Approaching Difficult Conversations

Event ID: 78472

In this interactive one-day seminar, participants increase self-awareness and confidence in conflict situations. They learn about the ingredients of conflict, mastering emotions and behaviors, and staying curious about what motivates others as they practice the skills needed for approaching difficult conversations.

Specifically participants will:

- Identify the elements of difficult conversations and how they impact them and those they work with.
- Recognize their role in conflict situations.
- Understand conflict styles and how to operate in stressful situations.
- Practice skills needed for holding difficult conversations such as self-management, disengaging, active listening, and asking intentional questions.

Presenter: Greg Abell

Facilitator: Kristi Gunerius

Clock Hours: 6

Registration Fee: 0

Location: NWESD

Date: 10/16/18

Time: 9:00 AM - 4:00 PM

Principles of Applied Behavior Analysis

Event ID: 78393

“Forty years of single-subject-design research testifies to the efficacy of time-limited, focused applied behavior analysis methods in reducing or eliminating specific problem behaviors and in teaching new skills to children and adults with autism or other developmental disorders.” (National Research Council, 2001)

The quote above summarizes what experts in the field of developmental disabilities have acknowledged for some time: instructional strategies utilizing the principles of Applied Behavior Analysis (ABA) are both effective and evidence-based. Practitioners working with special populations may find that a refresher in the specific methodologies used in ABA is warranted; others might be

seeking to develop their expertise for the first time.

This rigorous 40-hour* course is designed to provide those with and without previous experience with the opportunity to demonstrate both knowledge and application of these strategies. Participants will receive instruction through a cooperative partnership between the University of Washington Autism Center and Northwest Educational Service District. Instruction is provided on-site in Anacortes as well as through online sessions. Additional assignments are also required. Participants must attend all sessions and complete all assignments in order to receive the full allocation of available clock hours and the certificate of completion.

Participants in this training will:

- Examine and apply instructional strategies utilizing the principles of Applied Behavior Analysis.
- Collect and analyze student data.
- Develop intervention and instructional plans based upon data collection.

*Instruction provided in this course meets the coursework requirements for those pursuing Registered Behavior Technician (RBT) Certification. Other requirements apply and those interested in pursuing this option are encouraged to visit this website for additional requirements:

<https://bacb.com/rbt/>. Pursuit of RBT certification is not required, nor is it necessary for educational staff providing instruction utilizing the Principles of Applied Behavior Analysis.

REGISTRATION DEADLINE:

September 20, 2018

Presenter: Robin Talley

Facilitator: Kristi Gunerius

Clock Hours: 40

Registration Fee: \$675

Location: NWESD

Dates: 10/4/18, 10/18/18, 11/1/18, 11/15/18, 11/29/18, 12/13/18

Time: 9:00 AM - 2:30 PM

WA-Access to Instruction & Measurement (WA-AIM)

NWESD and OSPI have scheduled WA-AIM training for the 2018-19 school year. There are two components to the training; USER and TRAINER.

Session 1: WA-AIM for General Administration Only (USER) – This session is for users who would like an overview of WA-AIM, the updates, and how to administer the test.

Session 2: WA-AIM for General Administration AND Train-the-Trainer (TRAINER) – This is an extension of the morning General Administration class for personnel responsible for delivery of WA-AIM training within their local district. The session will take participants through all available resources and modules publicly available, key purpose and talking points of the resources and modules, and training delivery options. Participants in this training are required to attend both morning and afternoon sessions.

There will be a one-hour lunch break between sessions. USERS are excused at 12:00pm; TRAINERS will return for an additional two hours at 1:00pm. Participants are encouraged to bring laptops, tablets or other electronic devices for access to their district data.

Presenter: Toni Wheeler

Facilitator: Kristi Gunerius

Registration Fee: 0

Location: NWESD

Session 1 - USER

Clock Hours: 3

Time: 9:00 AM - 12:00 PM

Event ID: 78454

Date: 9/27/18

Event ID: 78452

Date: 9/27/18

Session 2 - TRAINER

Clock hours: 5

Time: 9:00 AM – 3:00 PM

Event ID: 78455

Date: 9/28/18

Event ID: 78453

Date: 9/28/18





teaching & learning

workshops and classes register >> pdenroller.org/nwesi/catalog

Facilitating Adult Learning: Skills & Strategies Training

Event ID: 78404

Leading adult learning requires a sophisticated set of facilitation skills and design. Laura Lipton will spend two days with us and bring her expertise on “Facilitating Adult Learning.” This workshop is highly interactive and experiential. Participants will apply effective principles and formats for designing professional learning and expand their repertoire of engaging strategies and structures when presenting. Explore ways to develop your audience and orchestrate process skill and group member interactions. This workshop will increase participants’ confidence and credibility when facilitating professional learning.

Presenter: Laura Lipton

Facilitator: Jennifer Longchamps

Clock Hours: 12

Registration Fee: \$500

Location: NWESD

Dates: 10/4/18, 10/5/18

Time: 8:30 AM - 3:00 PM

NGSS 101: Deep Dive into the Next Generation Science Standards

Understand the architecture and development of the Next Generation Science Standards. Learn about the connections between the Washington State Science Standards and the Next Generation Science Standards and develop a deeper understanding of the specific standards for your grade level. Increase your understanding of the Washington State implementation timeline for the NGSS and consider key instructional shifts for these new standards.

Presenter: Brian MacNevin

Facilitator: Nancy Menard

Clock Hours: 6

Registration Fee: \$25

Location: NWESD

Time: 8:30 AM - 3:30 PM

Event ID: 78493

Date: 9/25/18

Event ID: 78494

Date: 10/23/18

Event ID: 78495

Date: 11/28/18

Event ID: 78496

Date: 12/18/18

NGSS 102: Deeper Dive into the Next Generation Science Standards

The Next Generation Science Standards represent an ambitious set of student performance expectations. If you have attended an orientation to the NGSS, you have learned about the three dimensions of practices, crosscutting concepts, and core ideas; and you have learned about their role in engaging students in explaining phenomena from the world around them. In this class we will dig into the Engineering Design Process; the idea of bundling, through which the performance expectations are grouped together and touch on the idea of three dimensional assessment.

Considerations:

- Participants should previously have participated in NGSS 101 or an equivalent thorough formal introduction to the NGSS.
- Participants may find it beneficial to take NGSS 102 with a colleague or two who teach in the same grade level or within the same gradeband in a school.

Presenter: Brian MacNevin

Facilitator: Nancy Menard

Clock Hours: 6

Registration Fee: \$25

Location: NWESD

Time: 8:30 AM - 3:30 PM

NWESD Social-Emotional Summit

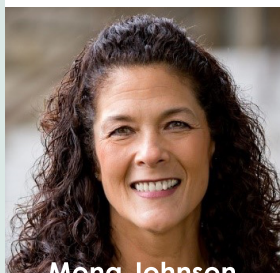
Save The Date : December 3-4, 2018



Dr. Jean Clinton

Social and Emotional Learning (SEL) has proven effective in positively affecting a broad range of behavioral, academic and social outcomes in students. The NWESD’s Social and Emotional Learning Summit 2018 is designed to present impactful and quality professional development opportunities for administrators, teachers, counselors and educational staff who work with, and on behalf of all children and youth.

The goal of this two-day summit is to advance each participant’s knowledge of best practices, and to provide recent findings and research on quality SEL programs and resources. Keynote speakers, and experts from across the region will be presenting on SEL research, theory and practice. Multiple breakout sessions will include: our regional districts sharing SEL programs and implementation, SEL and underrepresented populations, guidelines and policies related to Social Emotional Learning, SEL standards and modules from OSPI, Early Learning and SEL, and much more.



Mona Johnson

Day 1: “Connection is the Key”
Dr. Jean Clinton will share the importance of Adult/Child relationships, brain development, and the well-being of our students.

Day 2: “Fostering Professional Resilience and Social Emotional Wellness” with Mona Johnson, from OSPI.

Contact:
Nancy Menard
nmenard@nwesi.org

Event ID: 78503

Date: 12/6/18

Universal Design for Learning (UDL)

Event ID: 78520

We know from experience and neuroscience that individuals learn in varied ways. Universal Design for Learning (UDL) provides educators with practical strategies and techniques to ensure that all learners can meet high expectations such as the Common Core State Standards. In this introductory institute, participants learn the research basis for UDL, practical applications of UDL to lesson design, and helpful technology tools that support flexible, inclusive instruction.

Participants in the Institute will:

- Understand the underlying foundations of UDL
- Apply the three foundational concepts of UDL to a design challenge
- Understand the basic neuroscience behind the formation of the three UDL networks
- Generate applicable ideas and resources that address each of the guidelines
- Observe and analyze teaching videos using the UDL lens
- Evaluate common misconceptions about UDL
- Design a UDL lesson using the UDL Lesson Designer

Presenter: Nicole Tucker-Smith

Facilitator: Jennifer Longchamps

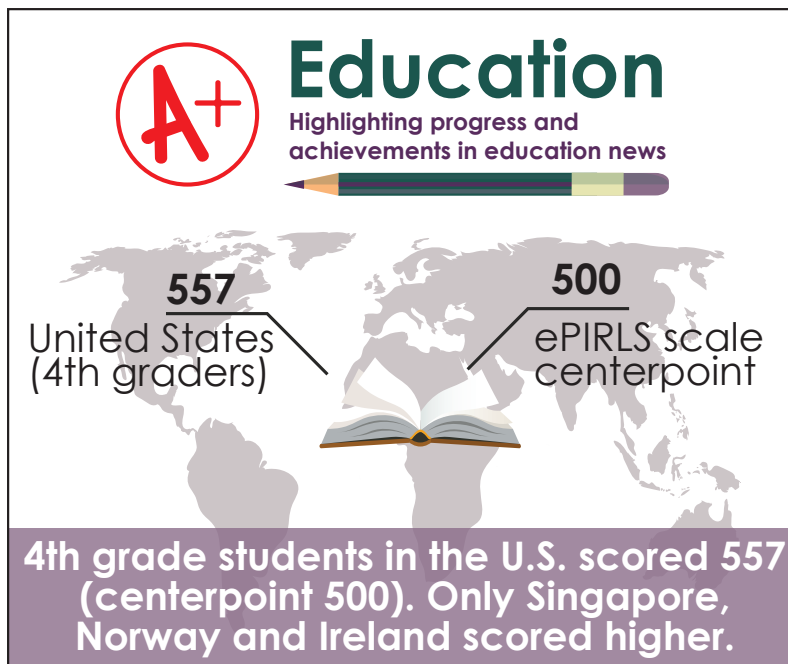
Clock Hours: 12

Registration Fee: \$500

Location: NWESD

Dates: 11/14/18, 11/15/18

Time: 8:30 AM - 3:30 PM



In 2016, the United States, along with 15 other education systems, participated in the new ePIRLS assessment of students' comprehension of online information. The average online informational reading score for fourth-grade students in the United States (557) was higher than the ePIRLS scale centerpoint (500). Only three education systems (Singapore, Norway, and Ireland) scored higher than the United States.

- **The Condition of Education 2016**

For more information, go to

<https://nces.ed.gov/programs/coe/>



Watch our new "About Us" Video!

<https://bit.ly/2whX4F9>

View current job openings at

www.nwesd.org/jobs





Continuing Education for K-12 Educators

VESi offers online continuing education courses for professional development and salary advancement.



Northwest Educational Service District 189

Together We Can



Northwest Educational Service District 189

Together We Can

Online Professional Development Courses



Courses are tablet compatible.

30 Clock Hours Fee: \$230

- Advanced Classroom Management
- Attention Deficit/Hyperactivity Disorder
- Autism & Asperger's Disorder
- Drugs & Alcohol in Schools
- Early Childhood: Family-Centered Services
- Educational Assessment
- Harassment, Bullying & Cyber-Intimidation in Schools
- Inclusion
- Infant & Toddler Mental Health
- Reading & Writing in Content Area
- Reading Fundamentals #1
- Reading Fundamentals #2
- Six Traits of Writing Model** NEW
- Talented & Gifted
- Teaching Diversity
- Teaching Elementary Math Conceptually
- Traumatized Child
- Violence in Schools

45 Clock Hours Fee: \$275

- Behavior is Language
- Early Childhood: Observation & Assessment
- Early Childhood: Program Planning
- Early Childhood: Typical & Atypical Development
- Learning Disabilities
- Reading Fundamentals #3
- Response to Intervention** NEW
- Teaching Secondary Math Conceptually** NEW
- Try DI!: Planning & Preparing a Differentiated Instruction Program
- Understanding Aggression
- Understanding & Implementing Common Core Standards
- Why DI?: An Introduction to Differentiated Instruction

To register for Clock Hours and for more information, visit virtualeduc.com/esd189 or call VESi at 1-800-313-6744.

VESi recommends that you check with your school district and/or state licensing agency to verify these course offerings will meet your district and/or state requirements for salary advancement and/or state certificate re-licensure.

NWESD Adopts a Stretch of Highway 20

Adopt-a-Highway is a roadside clean-up program promoting civic pride and local ownership in Washington and local communities. The NWESD Adopt-a-Highway crew was initiated and organized by Teaching & Learning Administrative Assistant Nancy Menard (pictured at below). Our group has a crew of 16 volunteer employees who plan to meet four times a year. The first clean-up crew gathered on Saturday June 2, at 7am and cleaned a two-mile stretch of highway between the Farmhouse Restaurant and the Memorial Highway exit (mileposts 53-55). Kudos to everyone involved for a job well done and keeping the roads leading into Anacortes clean!



Red Nose Day 2018



On Thursday, May 24th (Red Nose Day), the staff at the NWESD wore red from nose to toes, an effort spearheaded by Fiscal Technician Paula Molitor (pictured above, center). The “Red Nose Day & Migrant Families Challenge” put NWESD departments in a friendly competition with each other to see who could raise the most money through household and hygiene item donations for Red Nose Day and/or migrant families!

In collaboration with the NWESD Migrant Department, Tanya Rojas (pictured above, left), Migrant Out-of-School Youth Health Services Coordinator, plans to distribute these household items collected via home visits and camp visits throughout the summer. The donations are intended to assist migrant out-of-school youth overcome obstacles in order for them to continue their education. These young people may be young parents, eligible for McKinney Vento, and/or re-engaging in one of our region’s Open Doors programs. Through this work, Tanya will serve as the messenger of the NWESD’s efforts toward getting more young people in our region the support to graduate with a high school diploma.

Northwest Educational Service District (NWESD) Course Registration Form

Online: Register online at www.nwesd.org with a purchase order or credit card.

Mail-in: Mail registration form with check (payable to NWESD), purchase order, or credit card information to NWESD, 1601 R Avenue, Anacortes, WA 98221.

Fax: Fax registration form with purchase order or credit card information to 360-299-4070.

Register early - class sizes are limited. Classes not meeting minimum enrollment may be canceled.

Cancellations must be received in writing no later than two working days prior to the course to receive refund. A \$20 administrative fee will be assessed.

Clock hours and college credit are available if indicated under individual course descriptions. Payment and application for clock hours and college credit will occur at the end of the course session. Please do not send payment for clock hours or college credit with registration.

For registration information/assistance call 360-299-4057 or email registrar@nwesd.org.

Name (First, MI, Last)			Email Address (required)		
Home Address				Home Phone	
City	State	Zip	Work Phone		
District/Company			Position		
School/Building					Grade

Course Number	Course Title	Start Date	Course Fee

Video Conference Location (if applicable)	Total Fee \$
-------------------------------------------	--------------

Check Enclosed (payable to NWESD) #	Purchase Order #	District/Company Issuing PO
NWESD Accepts Visa or MasterCard Credit Cards		Personal Credit Card <input type="checkbox"/> District/Company Credit Card <input type="checkbox"/>
Credit Card No.	Expiration Date	
Authorized Signature	Authorized Amount \$	CVV/CVC (3 digit code on back of card)
Name on Card	Cardholder Phone	
Cardholder Billing Address (Street, City, State, Zip)		

For NWESD Use Only				Cashier Initials	Date
Amount \$	Check <input type="checkbox"/>	Purchase Order <input type="checkbox"/>	Credit Card <input type="checkbox"/>	Account Code	

board of directors



Charles Crabtree, District 1
Bellingham, Meridian



Dr. Jack Thompson, District 2
Blaine, Ferndale, Lopez Island, Lynden,
Mount Baker, Nooksack Valley, Orcas
Island, San Juan Island, Shaw Island



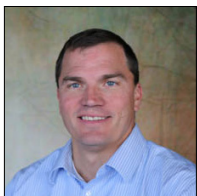
Mark Venn, District 3
Anacortes, Burlington-Edison, Concrete,
Conway, Darrington, La Conner, Mount
Vernon, Sedro-Woolley



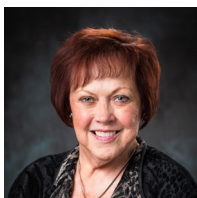
Claudia Talmadge, District 4
Coupeville, Lakewood, Mukilteo,
Oak Harbor, South Whidbey, Stanwood-
Camano



Dr. Alan Erickson, District 5
Everett



Cory Duskin, District 6
Arlington, Granite Falls, Index,
Marysville, Sultan



Claudia Buxton, District 7
Edmonds, Mukilteo



Gordon W. Griggs, District 8
Edmonds, Mukilteo



Merle Kirkley, District 9
Lake Stevens, Monroe, Snohomish



Northwest Educational Service District 189

Together We Can

Educational Service Districts have served Washington State for more than forty years, providing vital services and functioning as advocates for local districts. Northwest Educational Service District (NWESD) serves Whatcom, Skagit, Snohomish, Island, and San Juan counties.

NWESD's more than fifty programs are organized into seven departments to serve you: Administration, Early Learning, Fiscal Services, Prevention Center, Special Programs and Services, Teaching and Learning, and Technology Services. Please visit us on our website at nwesd.org for more information on each of these departments.

NWESD Mission

Together We Can... promote equity and excellence through leadership and service

Clock Hours

For assistance with clock hours, please contact Cindy Garrison at cgarrison@nwesd.org or call (360) 299-4057

Register early

Classes not meeting minimum enrollment may be cancelled.



We are pleased to present
NWESD's 2016-2017 Annual Report.

View online:
www.nwesd.org/2016-2017-annual-report

Washington will have more than **700,000 job openings by 2021**.
A majority will require knowledge in science, technology, engineering and math.



**DISCOVER YOUR
PATH
WITH SCIENCE
& MATH**

**STEM IS FOR
EVERYONE,
INCLUDING YOU!**

Hands-on and minds-on learning in science, technology, engineering, and mathematics teach you critical thinking and communications skills you'll need for whichever career you choose.

READY WA

LEARN MORE AT
READYWA.ORG



**Northwest Educational
Service District 189**

Together We Can

1601 R Avenue, Anacortes, WA 98221
Ph. 360-299-4000 Fx. 360-299-4070
www.nwesd.org